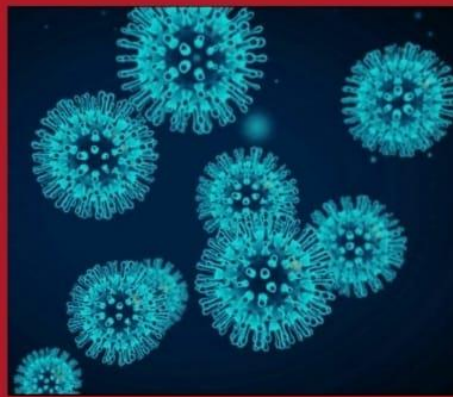


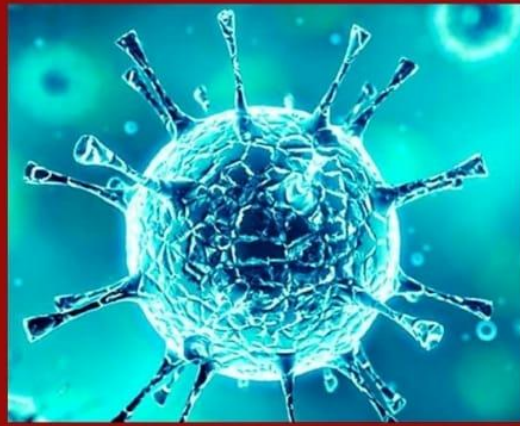


Elia Marra
2A





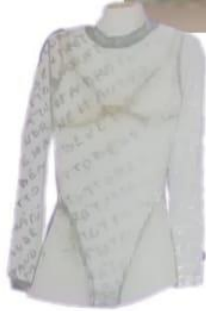
Tipo: gonna palloncino-body
Tessuto: lurex-tulle
Decorazione: lurex
Stagione: Estate
Colori: 
Alternative: 






Tipo: tuta-coprispalle
Tessuto: tulle-lurex
Decorazione: lurex-lurex
Stagione: inverno

Colori: 

Alternative: 



TIPO: abito aderente sopra-gonna-body
TESSUTO: mikado/paillettes-tulle
STAGIONE: inverno-estate

Colori:    

Alternativa: 